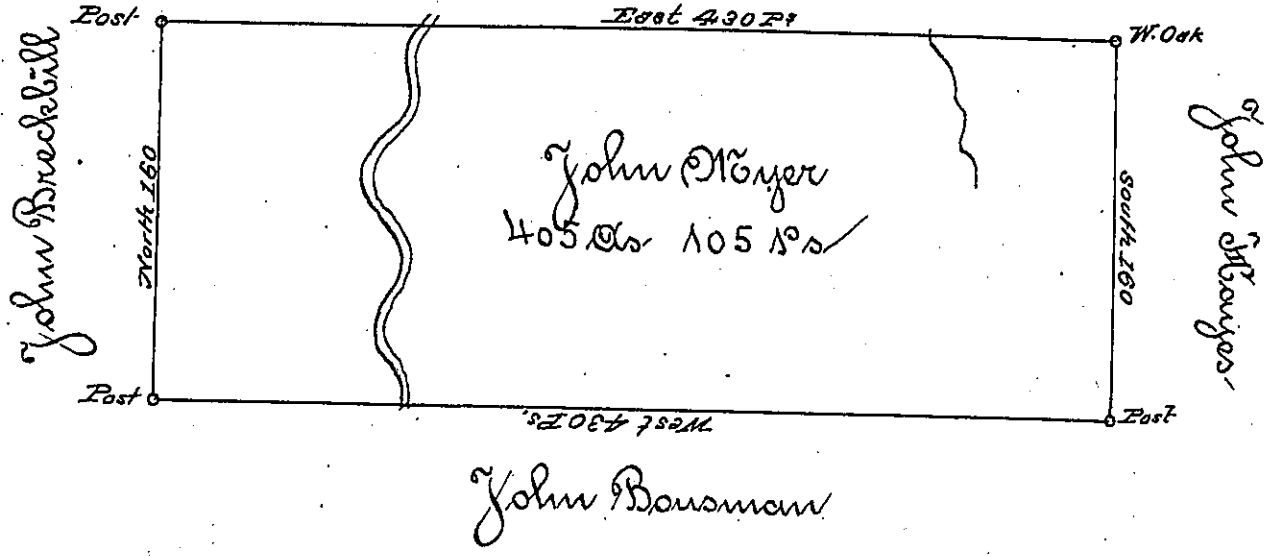


Adam Kubley



Situated on the Waters of Two-lick Creek in Wheatfield-Township Westmoreland County: Containing 405 Acres & 105 perches & allowance of six per Cent for Roads. Be surveyed for John Meyer the 29th day of Nov^r 1894 on Warrant Dated the 3^d day of May 1893~

Daniel Broadhead Esq^r S. G.

James Ross D. D.

IN TESTIMONY that the above is a copy of the original remaining on file in the Department of Internal Affairs of Pennsylvania, made conformably to an Act of Assembly approved the 16th day of February, 1833, I have hereunto set my Hand and caused the Seal of said Department to be affixed at Harrisburg, this

first day of August 1894

W. S. Stewart
Secretary of Internal Affairs